

volti subito

vol-ti su-bi-to | \ 'völtē' sūbēt(,)ō\

Definition of *volti subito*

: turn the page quickly —used as a direction in music —abbreviation v.s.

Introducing the PT8683 Volti Subito™

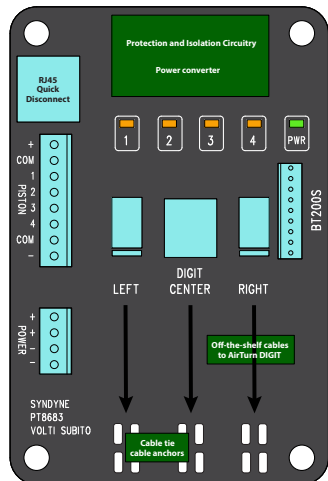
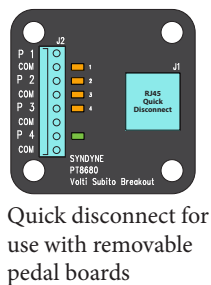
A simple, organ friendly solution to the organist's page turning problems

Since the invention of the tablet, organ builders have received requests to integrate page-turning solutions into pristine organ consoles. The Syndyne Volti Subito empowers organ builders by providing an attractive and easy to install solution which integrates seamlessly with the pipe organ. Organist friendly thumb pistons, toe pistons, or other controls are used to wirelessly turn pages in music presentation apps on the majority of tablets available today.

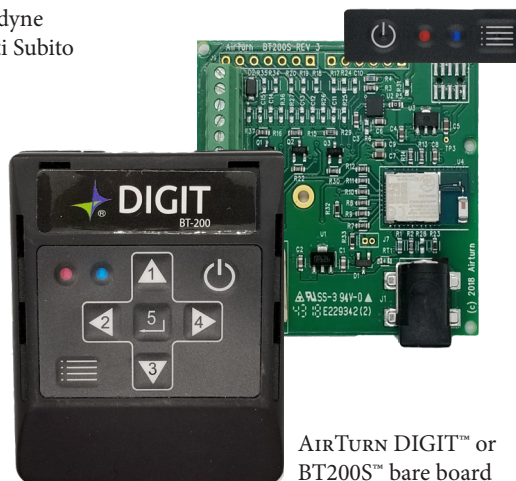
The Syndyne Volti Subito works with off-the-shelf wireless controllers from AirTurn. AirTurn controllers are well known, well supported, and easily updated in the field as tablets evolve and new presentation applications appear. Syndyne provides the organ interface technology while AirTurn bridges the wireless gap.

Organists will be thrilled to know that a solution is available that looks like it belongs on their instrument. Builders like the system because it is easy to install and readily adapts to the ever-changing world of tablets and music presentation applications.

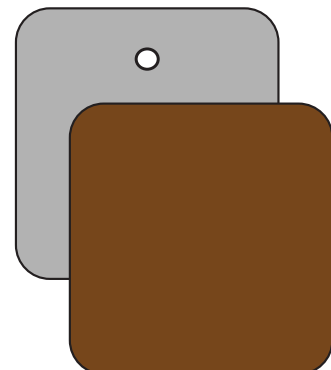
The PT8683 Volti Subito interfaces with several AirTurn controllers and a variety of accessories are available to customize integration with the organ console.

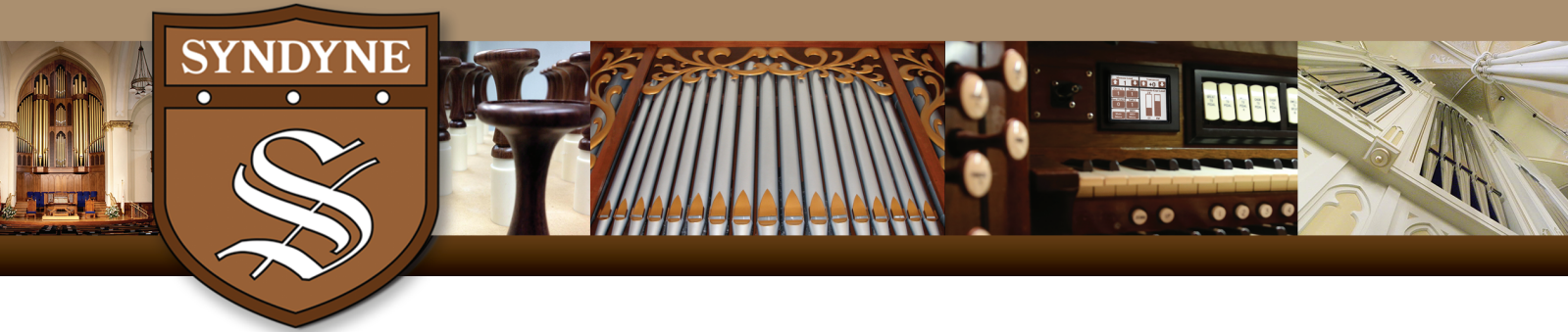


Syndyne Volti Subito



Magnetic mount for AirTurn DIGIT™





PT8683 Volti Subito™ Technical Details

The Volti Subito interfaces to two AirTurn controller models, the DIGIT, and the BT200S bare board.

The DIGIT is magnetically mounted on or near the console and is easily movable. This is a significant advantage in schools and performance venues where there may be many people playing the organ. Each organist can have a personal DIGIT configured to suit their particular tablet and presentation application. The DIGIT can also be moved to a convenient location for configuration if desired. Standard off-the-shelf cables are used to connect the DIGIT to the Volti Subito, allowing easy replacement if needed. Additional magnets are available.

The BT200S bare board allows for tight integration into the console with its minimalist control panel which can be mounted discretely on the console. The Volti Subito connects to the BT200S using a short wire harness.

In many cases, the Volti Subito will be added to an existing organ with a removable pedal board with toe pistons attached. For those situations, we offer a small quick-connect breakout board that allows the use of convenient off-the-shelf “CAT5” network cables to connect the Volti Subito to the pedal assembly.

Organ control can be through isolated contacts or by outputs from an organ relay. Control inputs are polarity insensitive and transient protected.

Power required is 8–30 VDC. Inputs operate on 8–30 VDC and consume less than 25mA. Organ power supplied to the piston connections is fused at 500mA. All fuses are the ‘self-resetting’ type.

The Volti Subito may be directly connected to isolated pistons or driven by outputs from a relay system:

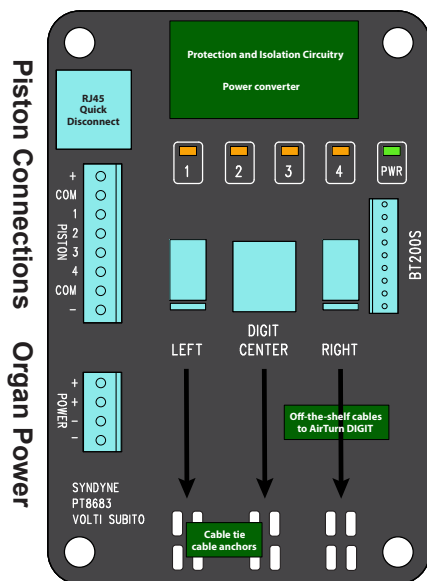
Direct to pistons:

- 1 - Piston Common
- 3 - Button 1
- 4 - Button 2
- 5 - Button 3
- 6 - Button 4
- 7+8 Jumpered together

From Relay:

- 2 - Input return
- 3 - Button 1 input
- 4 - Button 2 input
- 5 - Button 3 input
- 6 - Button 4 input

For two pistons, use inputs 1 & 3.
For four pistons, use inputs 1,2,3,4.



Connections to DIGIT

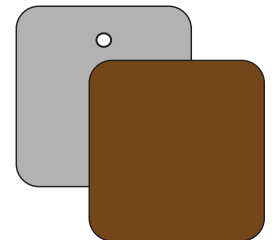
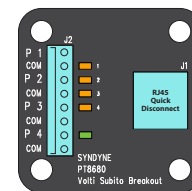
The Volti Subito is available with terminal blocks or IDC connectors for power and organ connections.

The unit is supplied with 3' cables for connecting to a DIGIT controller, DIGIT magnet and magnetic plate.

The board has fixed 1/4" standoffs which accept #6 mounting screws.

Accessories

- Quick-connect breakout panel
- Replacement cables
- DIGIT Magnetic Mounting Magnet
- DIGIT Plate
- BT200S Harness



AIRTURN™, DIGIT™, and BT200S™ are trademarks of AirTurn • www.airturn.com